



BEDROOMS: 3  
BATHROOMS: 2 + 1/2  
DEVELOPED SPACE: 2668 S.F.

## OUTSTANDING DESIGN FEATURES AND PREMIUM FINISHINGS

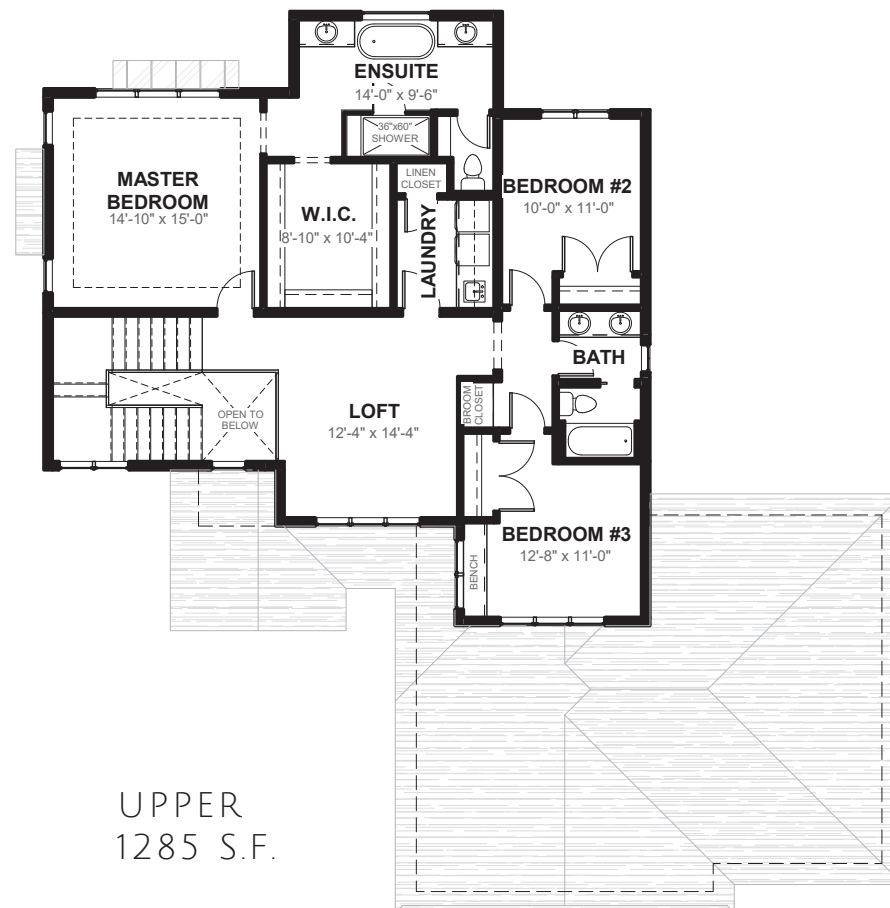
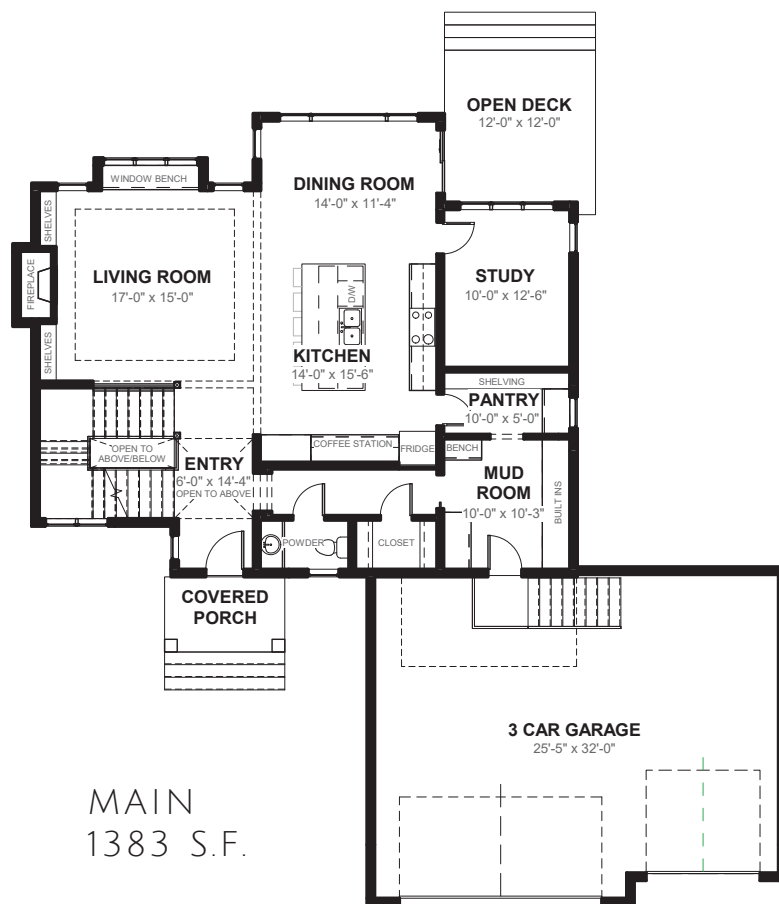
- Front staircase, which allows for more room to cook, play, or simply relax.
- 9'0" ceiling height on main and lower level.
- Private study.
- Enjoy your views through oversized windows throughout.
- Entertain in style with a large open deck.
- Ample counter space in the kitchen, with huge island and flush eating bar, finished in your choice quartz or granite countertops.
- Butler's pantry with solid, painted shelving.
- Windowed dining room, a great gathering space big enough to host important family events.
- Hide the mess in a dedicated Mudroom, complete with built-in lockers and generous front closet.
- Room to grow, large 2nd and 3rd bedrooms in "kids wing" complete with spacious closets and bathroom with dual-sink vanity.
- Upstairs laundry room.
- Escape to the spa-like owner's retreat-featuring 'His and Her' vanities, complete with a walk in closet with custom built ins.
- Relax in the oversized shower, or take a soak in the 6'0" tub.

## THE ADELINE

403.450.0078 | [WWW.ACDH.CA](http://WWW.ACDH.CA) | [WELCOMEHOME@ACDH.CA](mailto:WELCOMEHOME@ACDH.CA)

# THE ADELINE

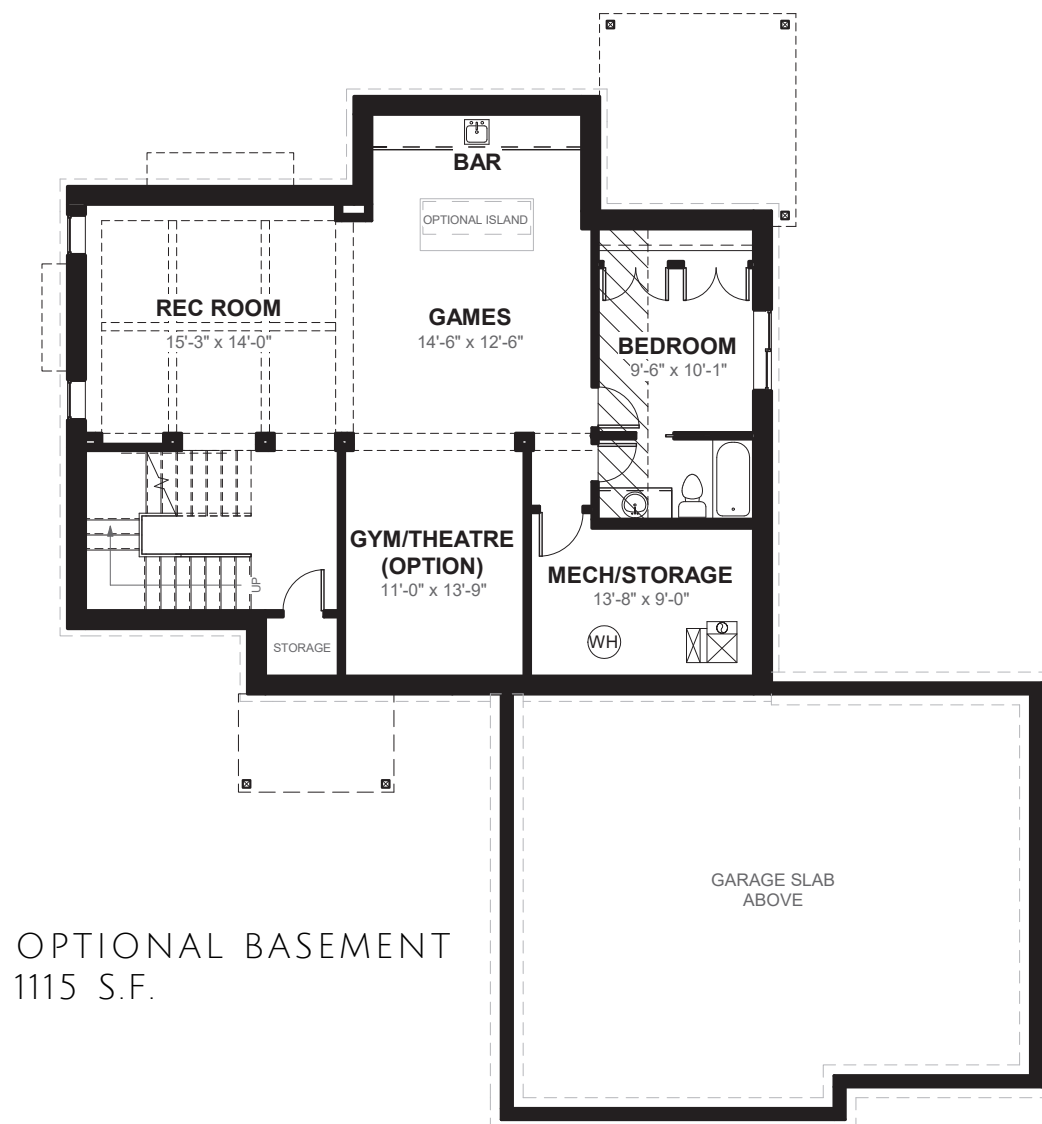
2668 S.F. | 3 BEDROOMS | 2 + 1/2 BATHROOMS



MONTERRA PHASE 2  
WELCOMEHOM@ACDH.CA  
PHONE: 403.450.0078  
WWW.ACDH.CA

# THE ADELINE

2668 S.F. | 3 BEDROOMS | 2 + 1/2 BATHROOMS



MONTERRA PHASE 2  
WELCOMEHOM@ACDH.CA  
PHONE: 403.450.0078  
WWW.ACDH.CA