

BEDROOMS: 4
BATHROOMS: 2 + 1/2
DEVELOPED SPACE: 2771 S.F.

OUTSTANDING DESIGN FEATURES AND PREMIUM FINISHINGS

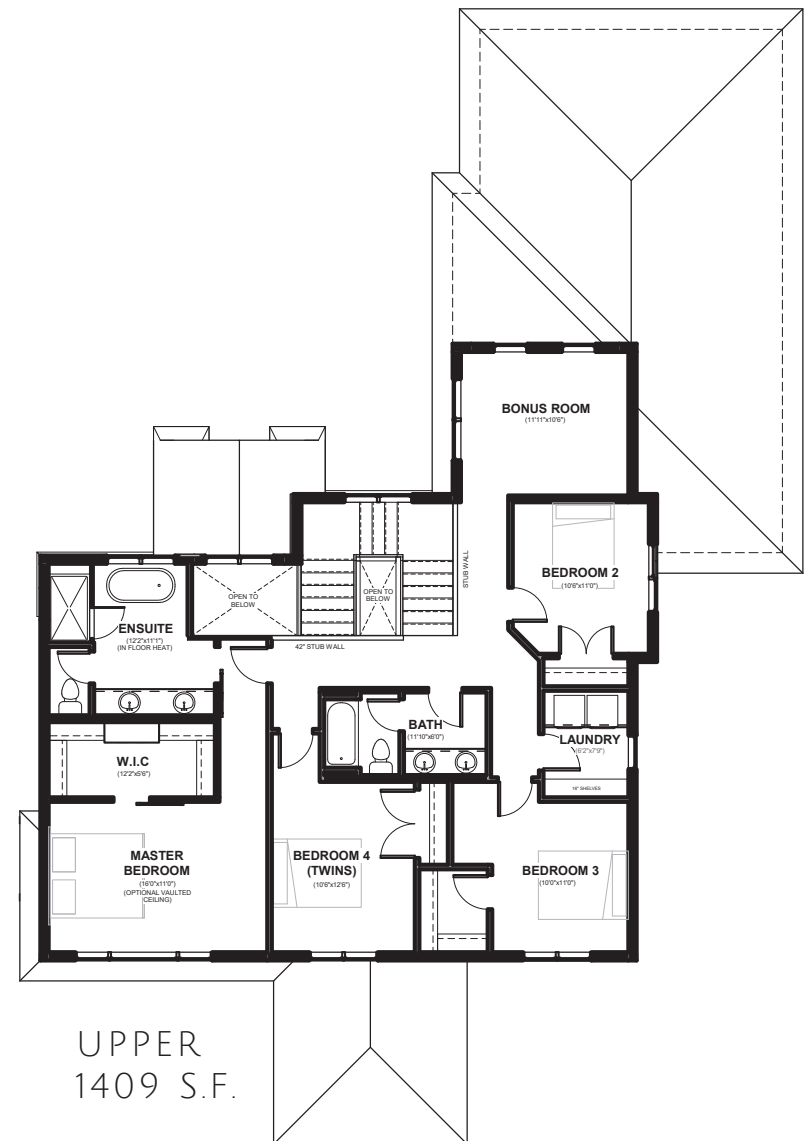
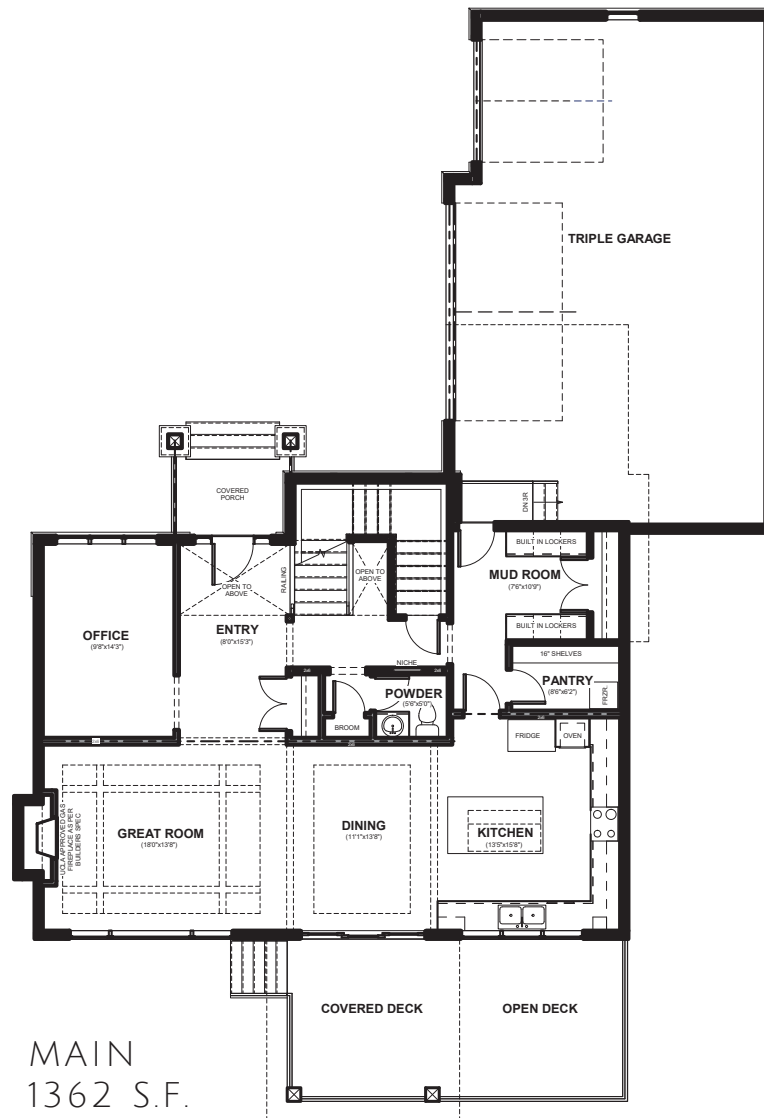
- Drive up to your home and be greeted with a low maintenance exterior featuring your choice of stucco or James Hardie with Smart Start trim.
- Park in your oversized triple car garage sure to make your neighbour jealous.
- Step into your spacious entryway and be greeted with an open concept layout, 9'0 ceilings and oversized windows throughout.
- Entertain in style with two Decks! This house comes standard with a covered deck and an open deck - the start to a perfect backyard gathering.
- Ample counter space with a U-shaped chef's kitchen complete with a massive island that seats six.
- Hide the mess in a dedicated Mudroom, complete with built-in lockers and generous front closet.
- Room to grow with 4 bedrooms and a "kids wing" complete with spacious closets and a bathroom with a dual-sink vanity.
- Upstairs laundry room
- Escape to a private, spa-like owner's retreat- Featuring 'His and Her' vanities, complete with an oversized shower with 8" shower head or relax in your beautiful 6' soaker tub.

THE ALICE

403.450.0078 | WWW.ACDH.CA | WELCOMEHOMES@ACDH.CA

THE ALICE

2771 S.F. | 4 BEDROOMS | 2 + 1/2 BATHROOMS

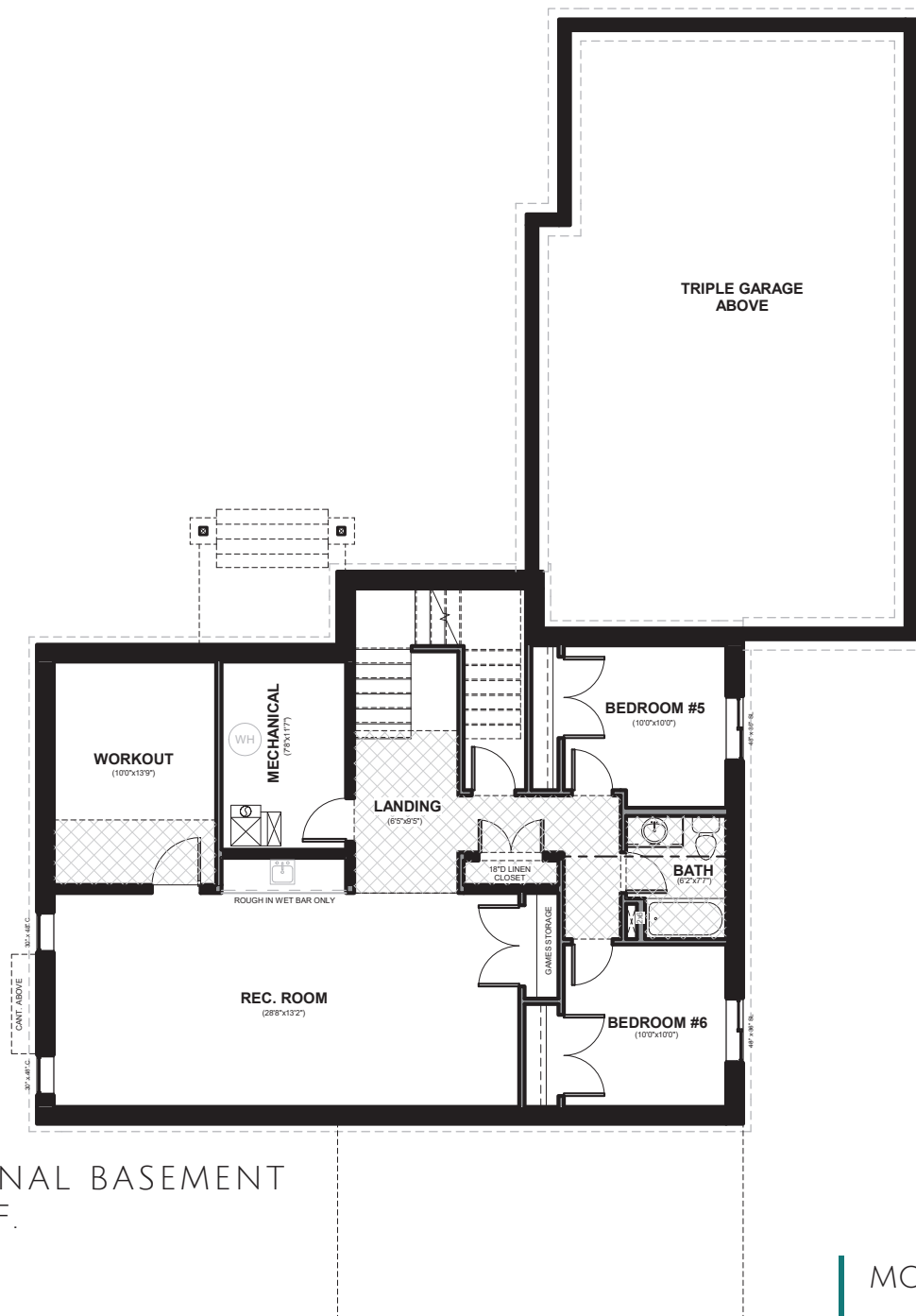


MONTERRA PHASE 2
WELCOMEHOM@ACDH.CA
PHONE: 403.450.0078
WWW.ACDH.CA

THE ALICE

2771 S.F. | 4 BEDROOMS | 2 + 1/2 BATHROOMS

OPTIONAL BASEMENT
1109 S.F.



MONTERRA PHASE 2
WELCOMEHOM@ACDH.CA
PHONE: 403.450.0078
WWW.ACDH.CA